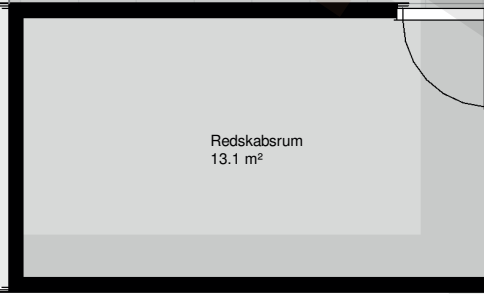
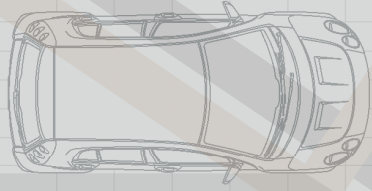
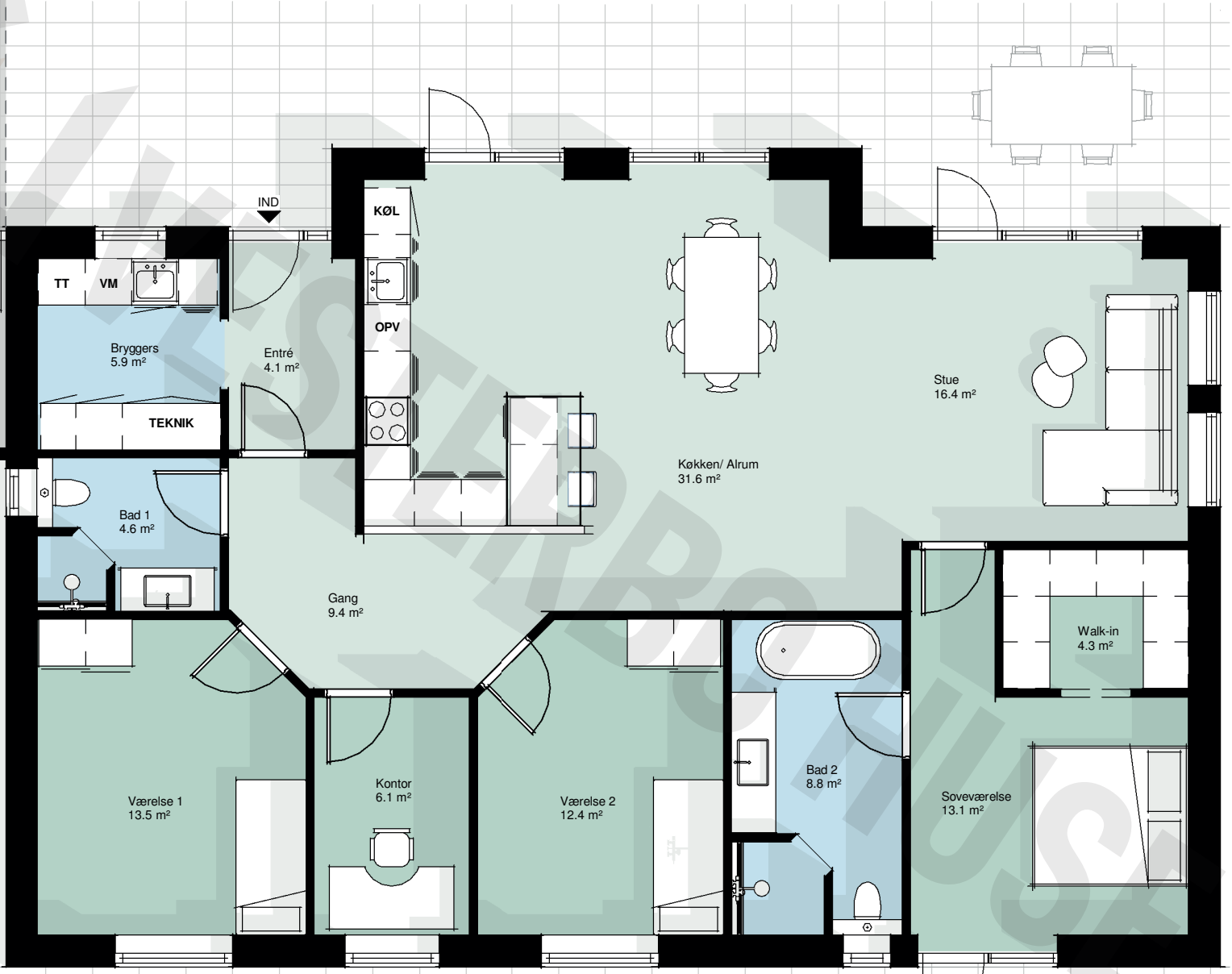


Carport
27.5 m²



Redskabsrum
13.1 m²



TT

VM

Bryggers
5.9 m²

IND

Entré
4.1 m²

KØL

OPV

TEKNIK

Bad 1
4.6 m²

Gang
9.4 m²

Køkken/ Alrum
31.6 m²

Stue
16.4 m²

Værelse 1
13.5 m²

Kontor
6.1 m²

Værelse 2
12.4 m²

Bad 2
8.8 m²

Soveværelse
13.1 m²

Walk-in
4.3 m²

